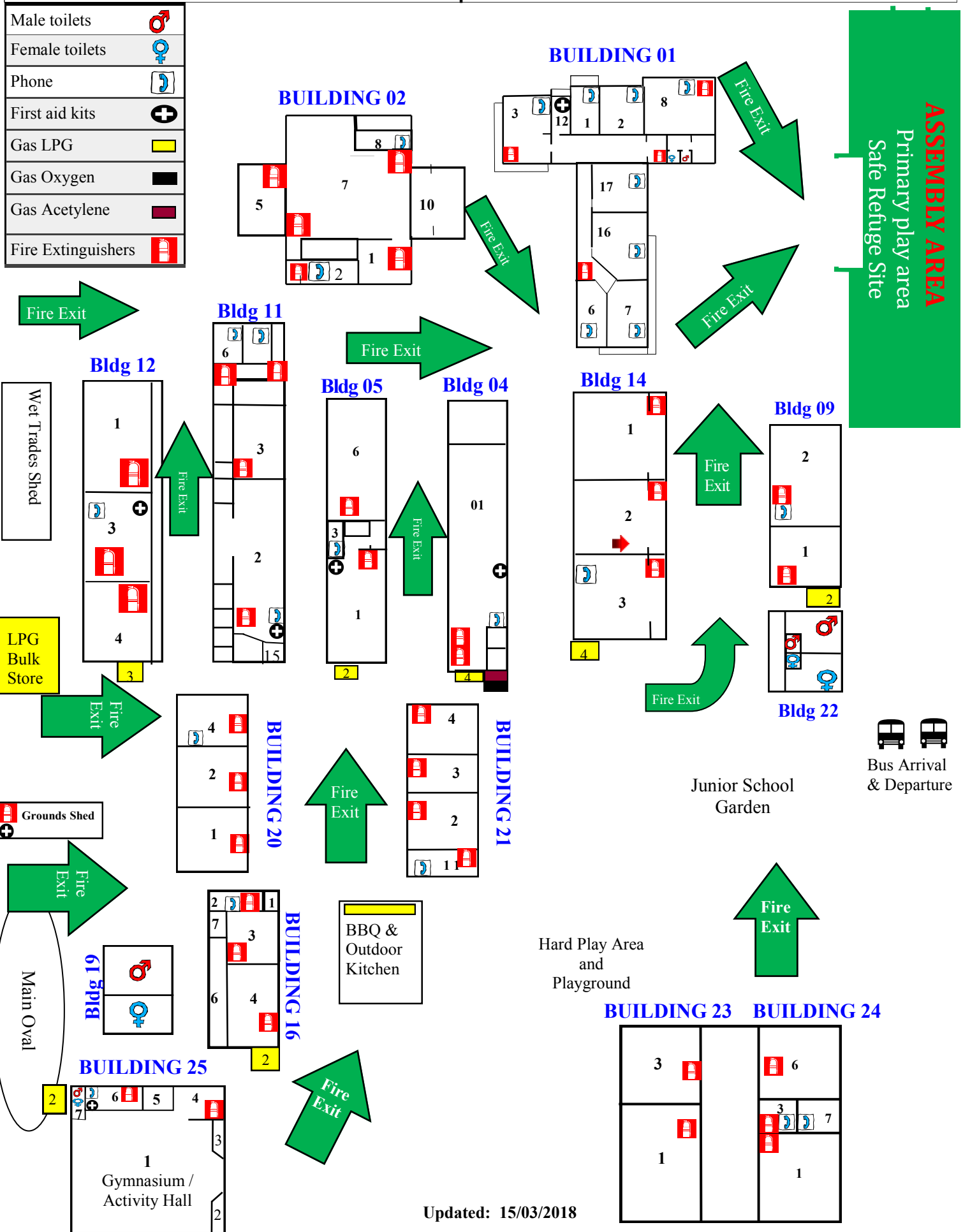


# BOOLEROO CENTRE DISTRICT SCHOOL

## Evacuation Diagram

2-10 Stephens Street

|                    |  |
|--------------------|--|
| Male toilets       |  |
| Female toilets     |  |
| Phone              |  |
| First aid kits     |  |
| Gas LPG            |  |
| Gas Oxygen         |  |
| Gas Acetylene      |  |
| Fire Extinguishers |  |



Updated: 15/03/2018

If the fire is in close proximity to your designated exit route choose another route which will get you safely to the Assembly area